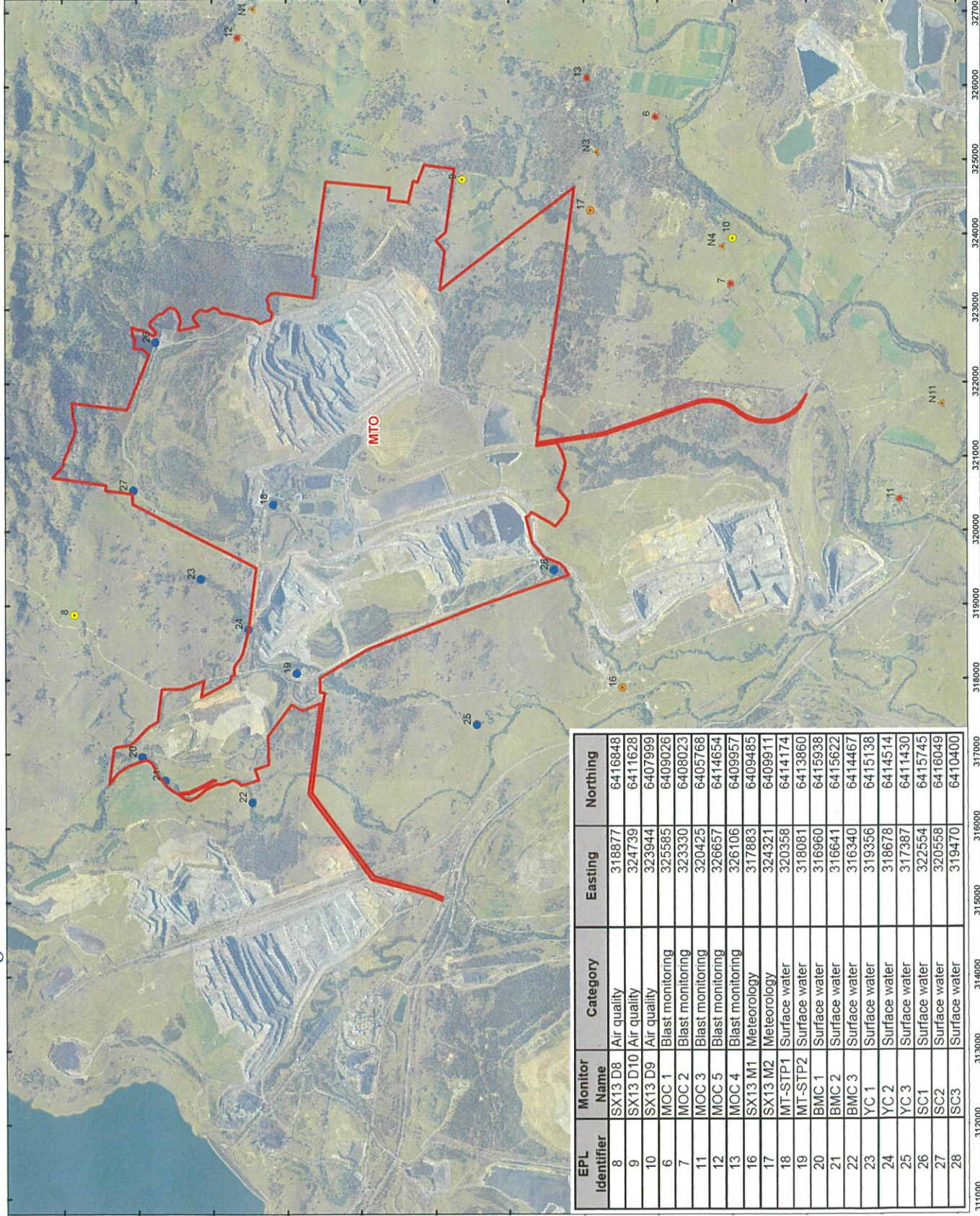


Mt Owen Complex

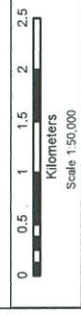
Mt Owen Mine Monitoring Locations



EPL Identifier	Monitor Name	Category	Eastings	Northing
8	SX13 D8	Air quality	318877	6416848
9	SX13 D10	Air quality	324739	6411628
10	SX13 D9	Air quality	323944	6407999
6	MOC 1	Blast monitoring	325585	6409026
7	MOC 2	Blast monitoring	323330	6408023
11	MOC 3	Blast monitoring	320425	6405768
12	MOC 5	Blast monitoring	326657	6414654
13	MOC 4	Blast monitoring	326106	6409957
16	SX13 M1	Meteorology	317883	6409485
17	SX13 M2	Meteorology	324321	6409911
18	MT-STP1	Surface water	320358	6414174
19	MT-STP2	Surface water	318081	6413860
20	BMC 1	Surface water	316960	6415938
21	BMC 2	Surface water	316641	6415622
22	BMC 3	Surface water	316340	6414467
23	YC 1	Surface water	319356	6415138
24	YC 2	Surface water	318678	6414514
25	YC 3	Surface water	317387	6411430
26	SC1	Surface water	322554	6415745
27	SC2	Surface water	320558	6416049
28	SC3	Surface water	319470	6410400

Legend
MTO_EPL
Monitoring Type

- air
- ★ blast
- meteorology
- ▲ noise
- surfacewater



CERTIFICATION
I, Michael Geoffrey Deaves, Registered Mining Surveyor (BOSA) ID No. 8464, certify that the information shown on this plan is on Survey datum MGA96

ENDORSEMENT
Information shown on this plan has been supplied by Mt Owen Complex Environment and Community Department and has not been surveyed by me

M. Deaves
Michael Deaves
Date: 20/3/19

COORDINATE SYSTEM:
GDA 1984 MGA 20 56
Projection: Transverse Mercator
Datum: GDA 1984